



FARMVILLE

INFRASTRUCTURE READY RESIDENTIAL PLOTS



Grand Entrance Gate with Security

Tranquil Surroundings... Easy access from the city
A large well developed green campus with
Multiple amenities for recreation & leisure...
... & a great place to spend the good life!

Farmville is realization of the dreams of the evolving tastes of the citizens of Vadodara. They look around for a space to call their own, one that they may use now as a weekend home or even to live a life away from the hustle & bustle of the city or as an investment option.

Developed as a thriving community with lots of greenery, landscaped gardens and a host of recreational facilities, living at Farmville would be similar to being at a luxury resort. Be it the swimming pool, the clubhouse, the party lawns with pantry, the outdoor & indoor gaming facility or the Temple & Yoga Hall...there is something for every member of the family.

Build your farmhouse, something you always dreamt of. Give a gift to you & your family, one that you shall cherish for the rest of your life!



a plush clubhouse welcomes you to a world of leisure facilities



A golden opportunity, to build your dream bungalow or weekend home

The plots of varied sizes allow you to create a home as per your needs and budgets. Realize your dream of a bungalow or weekend home at Farmville.

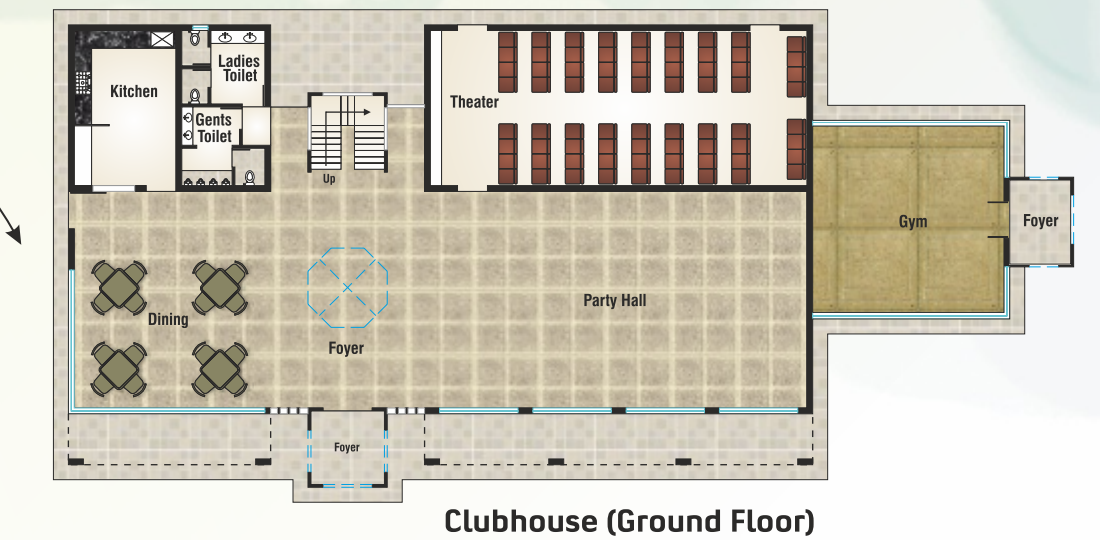
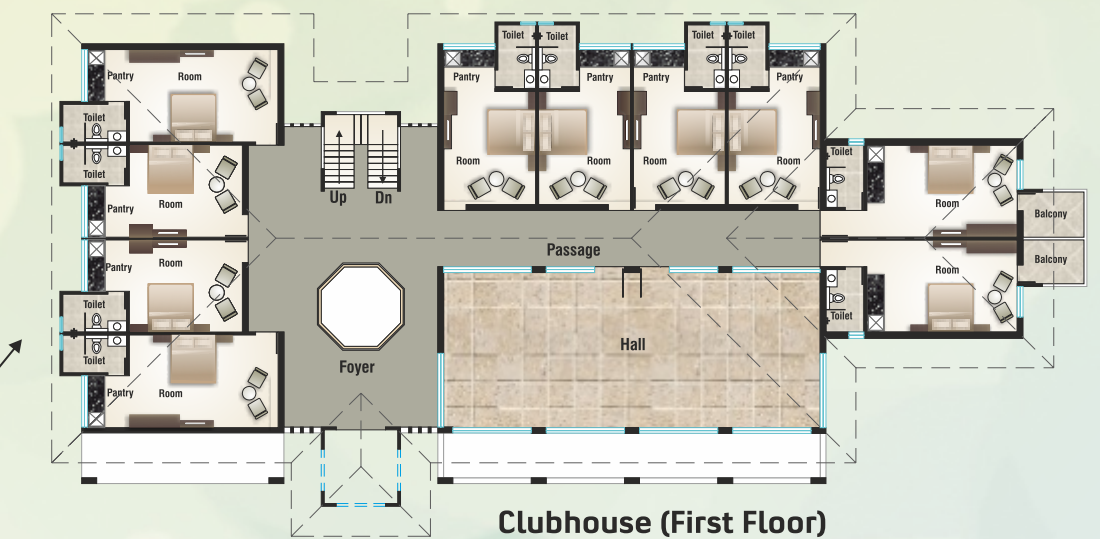
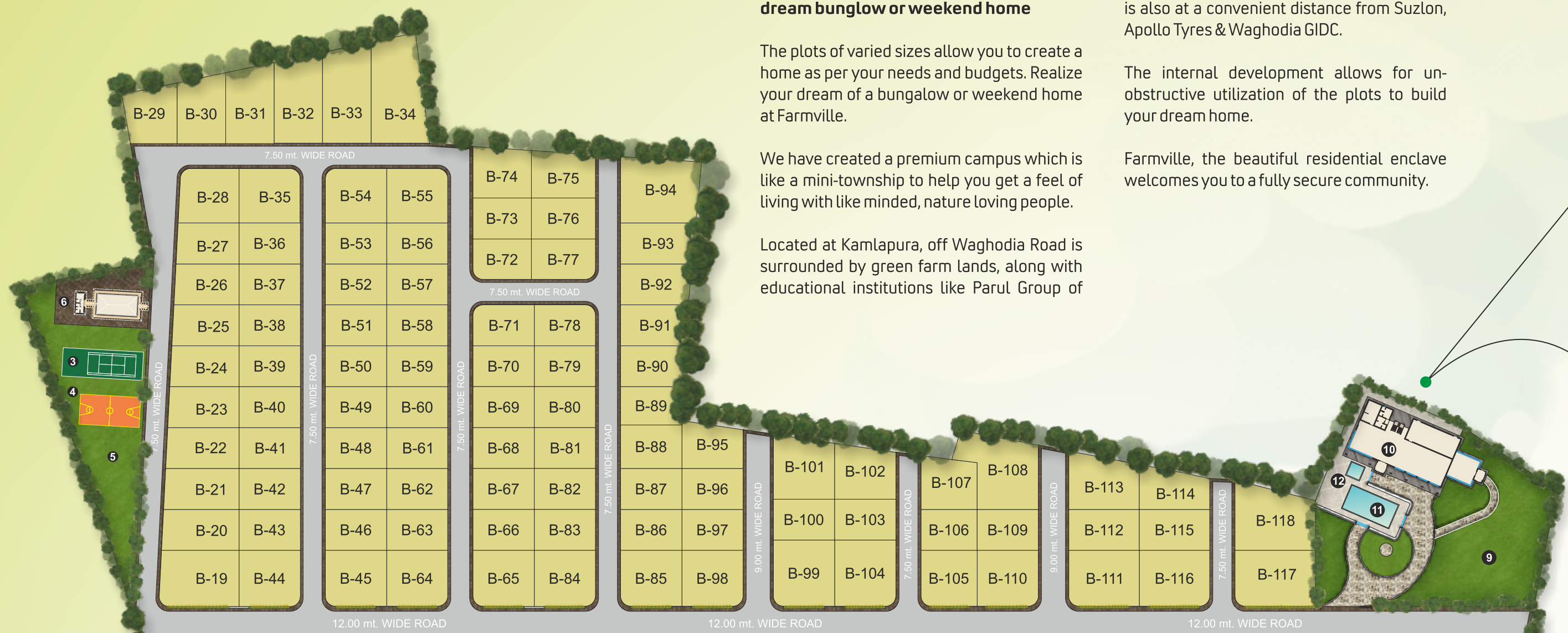
We have created a premium campus which is like a mini-township to help you get a feel of living with like minded, nature loving people.

Located at Kamlapura, off Waghodia Road is surrounded by green farm lands, along with educational institutions like Parul Group of

Institutions, ITI College, Dhiraj Hospital etc. It is also at a convenient distance from Suzlon, Apollo Tyres & Waghodia GIDC.

The internal development allows for unobstructive utilization of the plots to build your dream home.

Farmville, the beautiful residential enclave welcomes you to a fully secure community.



- 1) Temple
- 2) Yoga cum Meditation Hall
- 3) Tennis Court
- 4) Basketball Court
- 5) Landscaped Garden
- 6) Indoor Games Hall
- 7) Children's Play Area
- 8) Landscaped Garden
- 9) Landscaped Garden
- 10) Clubhouse
- 11) Swimming Pool
- 12) Toddler's Pool

Area Table

Plot No.	Area Sq.ft	Plot No.	Area Sq.ft	Plot No.	Area Sq.ft	Plot No.	Area Sq.ft	Plot No.	Area Sq.ft
A-1	5552	A-49	3104	A-97	2405	B-27	2424	B-75	2794
A-2	5446	A-50	3079	A-98	2405	B-28	3113	B-76	2521
A-3	3874	A-51	2387	A-99	2405	B-29	2709	B-77	2520
A-4	3197	A-52	2863	A-100	2405	B-30	3054	B-78	2405
A-5	3992	A-53	2521	A-101	2405	B-31	3529	B-79	2405
A-6	3547	A-54	2387	A-102	2789	B-32	4003	B-80	2405
A-7	4976	A-55	3053	A-103	2789	B-33	4478	B-81	2405
A-8	7126	A-56	3044	A-104	2405	B-34	5286	B-82	2405
A-9	3886	A-57	7126	A-105	2405	B-35	3188	B-83	2405
A-10	4020	A-58	4460	A-106	2405	B-36	2398	B-84	3307
A-11	4263	A-59	5934	A-107	2405	B-37	2405	B-85	3303
A-12	3937	A-60	6385	A-108	2805	B-38	2405	B-86	2405
A-13	4738	A-61	8113	A-109	2805	B-39	2405	B-87	2405
A-14	4976	A-62	4001	A-110	2405	B-40	2405	B-88	2563
A-15	3547	A-63	4001	A-111	2405	B-41	2405	B-89	2157
A-16	4565	A-64	4001	A-112	2405	B-42	2405	B-90	2433
A-17	4725	A-65	4001	A-113	2405	B-43	2405	B-91	2581
A-18	3823	A-66	4001	A-114	2769	B-44	3298	B-92	2730
A-19	5364	A-67	4001	A-115	7724	B-45	3307	B-93	2878
A-20	6621	A-68	5159	A-116	7051	B-46	2405	B-94	4779
A-21	2405	A-69	6488	A-117	6193	B-47	2405	B-95	2540
A-22	2841	A-70	3407	A-118	6066	B-48	2405	B-96	2405
A-23	2841	A-71	3551	B-1	4410	B-49	2405	B-97	2405
A-24	2841	A-72	3551	B-2	5513	B-50	2405	B-98	3303
A-25	2841	A-73	3551	B-3	5513	B-51	2405	B-99	3908
A-26	3316	A-74	3551	B-4	4410	B-52	2405	B-100	2405
A-27	3375	A-75	7313	B-5	4850	B-53	2405	B-101	3548
A-28	3655	A-76	5857	B-6	5915	B-54	3188	B-102	3015
A-29	3655	A-77	2234	B-7	8541	B-55	3188	B-103	2405
A-30	3655	A-78	2234	B-8	8435	B-56	2405	B-104	3908
A-31	3657	A-79	2405	B-9	7850	B-57	2405	B-105	3031
A-32	4313	A-80	2405	B-10	8306	B-58	2405	B-106	2204
A-33	4313	A-81	2405	B-11	6749	B-59	2405	B-107	2710
A-34	6667	A-82	2405	B-12	6404	B-60	2405	B-108	4718
A-35	5377	A-83	2405	B-13	6264	B-61	2405	B-109	2405
A-36	8197	A-84	2790	B-14	6125	B-62	2405	B-110	3307
A-37	6921	A-85	2788	B-15	5883	B-63	2405	B-111	3807
A-38	6132	A-86	2405	B-16	5100	B-64	3307	B-112	2769
A-39	2863	A-87	2405	B-17	4356	B-65	3307	B-113	3501
A-40	2387	A-88	2405	B-18	3670	B-66	2405	B-114	2580
A-41	3205	A-89	2405	B-19	4231	B-67	2405	B-115	2769
A-42	3186	A-90	2405	B-20	2998	B-68	2405	B-116	3807
A-43	3140	A-91	2405	B-21	2916	B-69	2405	B-117	4335
A-44	2387	A-92	2405	B-22	2835	B-70	2405	B-118	4436
A-45	2863	A-93	5513	B-23	2753	B-71	2405		
A-46	2863	A-94	5513	B-24	2672	B-72	2287		
A-47	2387	A-95	2405	B-25	2591	B-73	2288		
A-48	3144	A-96	2405	B-26	2509	B-74	2770		



FARMVILLE Layout Plan

All Amenities are ready to use.

INFRASTRUCTURE

- 1) Decorative Grand Entrance with Security & Main Gate
- 2) Periphery compound wall for gated community
- 3) Landscaped garden for common plot
- 4) Plantation on approach road and all internal roads.
- 5) Concrete roads & pavers for dust free environment
- 6) Underground cabling for power supply
- 7) Water Connection
- 8) Internal Road Signages

CLUB HOUSE

- 1) Air-conditioned Gym
- 2) Luxury Lounge
- 3) Indoor Game Room
- 4) Video Theater
- 5) 10 Studio Guest Rooms
- 6) Banquet Hall with Kitchen

OUTDOOR RECREATION

- 1) Swimming Pool
- 2) Children's Play Area
- 3) Basketball Court
- 4) Tennis Court
- 5) Jogging Track

OTHERS

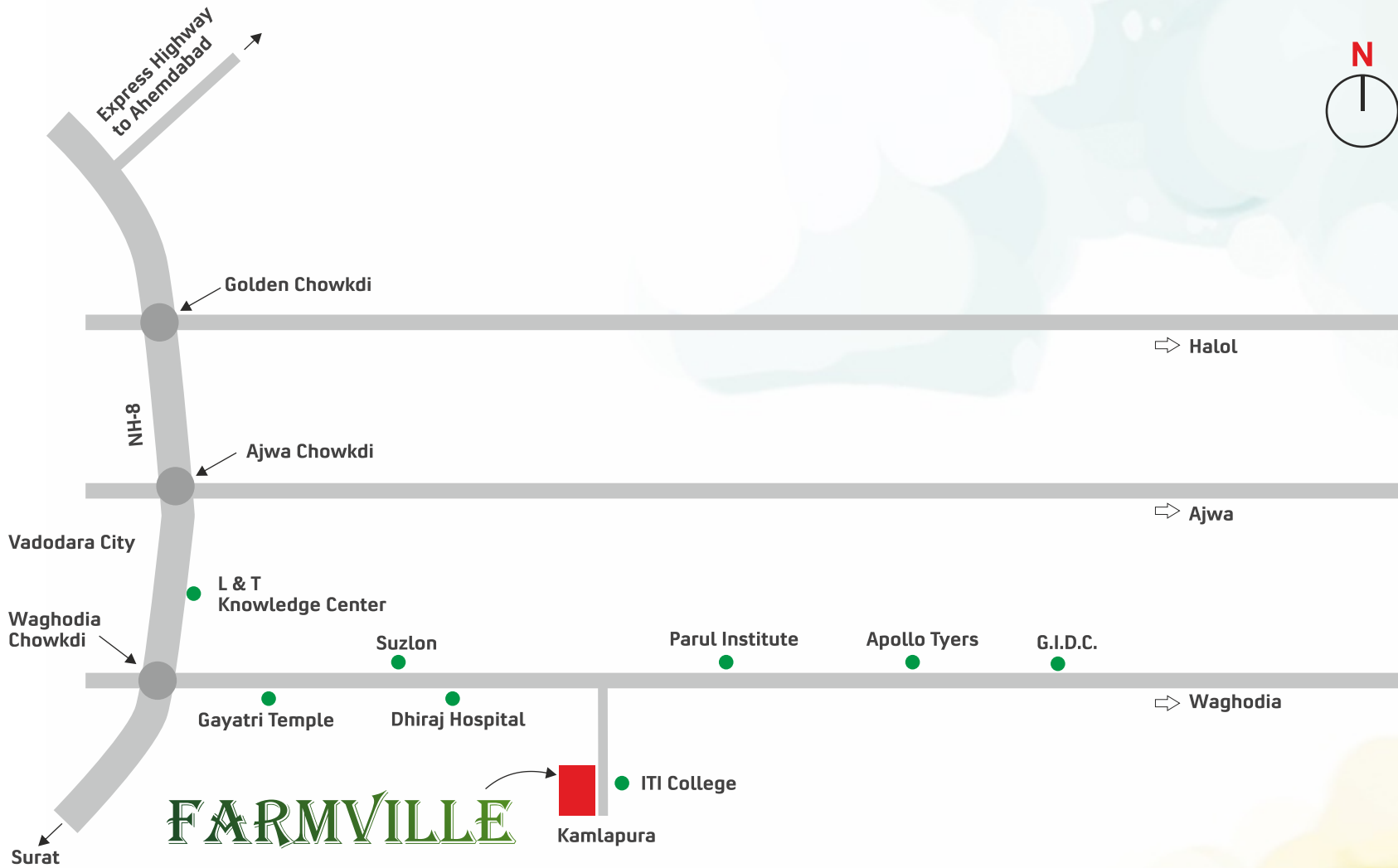
- 1) Party/Event Lawn
- 2) Temple
- 3) Yoga / Meditation Hall
- 4) NA Approved Residential Plots

Amenities Photos are actual





Grand Club House with
Swimming Pool



Developers :
Farmville Enterprise

Kamlapura Village, Waghodia Main Road, Vadodara.
Mobile : + 91 76 23 8000 23 | 76 23 9000 23

Architects :
 Davenport Ablaze Architects

We Request ♦ Acceptance of payment towards booking of plot is subject to the rules and regulations of the developers. • No plot will be considered allotted, without payment of the entire amount. • The entire payment, including all additional amount, is to be made before possession, well within the time limit. • Documentation charges, Stamp duty, Registration charges etc. will be borne by plot holder. • Continuous default in payment will lead to cancellation. • Developers shall have full rights to change or alter the plan / specifications. • In the case of booking cancellation 20% of the booking amount plus extra expenditure will be deducted from booking amount. The amount will be refunded after the new booking of same plot. • This brochure does not form a part of agreement or any legal documents, it is for easy display of the project. • The plot is to be used purely for residential purpose only. • Plot area mentioned here are indicative, actual plot area may vary on site. • The facilities and amenities mentioned here will be completed only after the entire project is constructed. • Photographs shown are for easy understanding, actual room size, amenities shown in picture will vary. • Subject to Vadodara jurisdiction.